



Innovation for  
a Better Life



## LG NeON™ 2 **LG320N1C-G4**

### 60 cell

LG's new module, LG NeON™ 2, adopts Cello technology. Cello technology replaces 3 busbars with 12 thin wires to enhance power output and reliability. LG NeON™ 2 demonstrates LG's efforts to increase customer's values beyond efficiency. It features enhanced warranty, durability, performance under real environment, and aesthetic design suitable for roofs.



#### Enhanced Performance Warranty

LG NeON™ 2 has an enhanced performance warranty. The annual degradation has fallen from -0.7%/yr to -0.6%/yr. Even after 25 years, the cell guarantees 2.4% more output than the previous LG NeON™ modules.



#### High Power Output

Compared with previous models, the LG NeON™ 2 has been designed to significantly enhance its output efficiency, thereby making it efficient even in limited space.



#### Aesthetic Roof

LG NeON™ 2 has been designed with aesthetics in mind; thinner wires that appear all black at a distance. The product may help increase the value of a property with its modern design.



#### Outstanding Durability

With its newly reinforced frame design, LG has extended the warranty of the LG NeON™ 2 for an additional 2 years. Additionally, LG NeON™ 2 can endure a front load up to 6000 Pa, and a rear load up to 5400 Pa.



#### Better Performance on a Sunny Day

LG NeON™ 2 now performs better on sunny days thanks to its improved temperature coefficient.



#### Double-Sided Cell Structure

The rear of the cell used in LG NeON™ 2 will contribute to generation, just like the front; the light beam reflected from the rear of the module is reabsorbed to generate a great amount of additional power.

#### About LG Electronics

LG Electronics is a global player who has been committed to expanding its capacity, based on solar energy business as its future growth engine. We embarked on a solar energy source research program in 1985, supported by LG Group's rich experience in semi-conductor, LCD, chemistry, and materials industry. We successfully released the first Mono X® series to the market in 2010, which were exported to 32 countries in the following 2 years, thereafter. In 2013, LG NeON™ (previously known as Mono X® NeON) won "Intersolar Award", which proved LG is the leader of innovation in the industry.



## LG NeON™ 2 LG320N1C-G4

### Mechanical Properties

Cells	6 x 10
Cell Vendor	LG
Cell Type	Monocrystalline / N-type
Cell Dimensions	156.75 x 156.75 mm / 6 inches
# of Busbar	12 (Multi Wire Busbar) <span style="color: red;">+</span>
Dimensions (L x W x H)	1640 x 1000 x 40 mm 64.57 x 39.37 x 1.57 inch
Front Load	6000 Pa / 125 psf <span style="color: red;">+</span>
Rear Load	5400 Pa / 113 psf <span style="color: red;">+</span>
Weight	17.0 ± 0.5 kg / 37.48 ± 1.1 lbs
Connector Type	MC4, MC4 Compatible, IP67
Junction Box	IP67 with 3 Bypass Diodes
Length of Cables	2 x 1000 mm / 2 x 39.37 inch
Glass	High Transmission Tempered Glass
Frame	Anodized Aluminum

### Certifications and Warranty

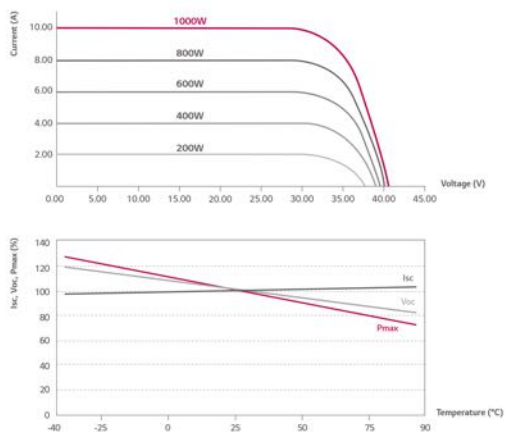
Certifications	IEC 61215, IEC 61730-1/-2 IEC 62716 (Ammonia Test) IEC 61701 (Salt Mist Corrosion Test) ISO 9001 UL 1703
Module Fire Performance (USA)	Type 2 (UL 1703)
Fire Rating (for CANADA)	Class C (ULC/ORD C1703)
Product Warranty	12 years <span style="color: red;">+</span>
Output Warranty of Pmax	Linear warranty* <span style="color: red;">+</span>

\* 1) 1st year: 98%, 2) After 2nd year: 0.6%p annual degradation, 3) 83.6% for 25 years

### Temperature Characteristics

NOCT	46 ± 3 °C
Pmpp	-0.38 %/°C <span style="color: red;">+</span>
Voc	-0.28 %/°C
Isc	0.03 %/°C

### Characteristic Curves



### Electrical Properties (STC \*)

Module Type	320 W
MPP Voltage (Vmpp)	33.6
MPP Current (Impp)	9.53
Open Circuit Voltage (Voc)	40.9
Short Circuit Current (Isc)	10.05
Module Efficiency (%)	19.5
Operating Temperature (°C)	-40 ~ +90
Maximum System Voltage (V)	1000
Maximum Series Fuse Rating (A)	20
Power Tolerance (%)	0 ~ +3

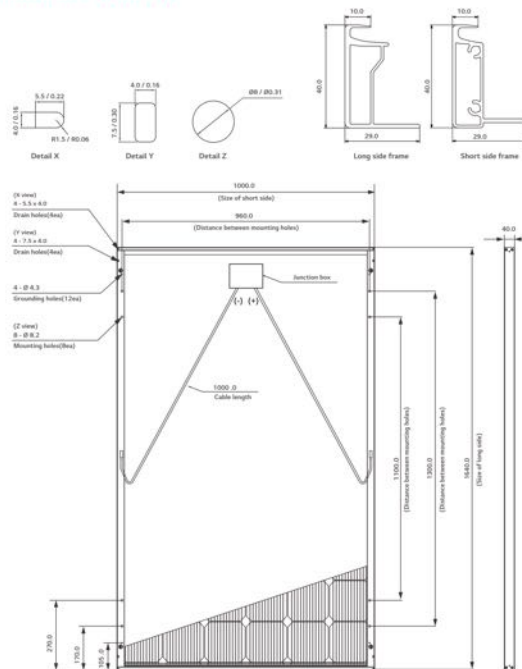
\* STC (Standard Test Condition): Irradiance 1000 W/m<sup>2</sup>, Module Temperature 25 °C, AM 1.5  
\* The nameplate power output is measured and determined by LG Electronics at its sole and absolute discretion.  
\* The typical change in module efficiency at 200 W/m<sup>2</sup> in relation to 1000 W/m<sup>2</sup> is -2.0%.

### Electrical Properties (NOCT\*)

Module Type	320 W
Maximum Power (Pmax)	234
MPP Voltage (Vmpp)	30.7
MPP Current (Impp)	7.60
Open Circuit Voltage (Voc)	37.9
Short Circuit Current (Isc)	8.10

\* NOCT (Nominal Operating Cell Temperature): Irradiance 800 W/m<sup>2</sup>, ambient temperature 20 °C, wind speed 1 m/s

### Dimensions (mm/in)



\* The distance between the center of the mounting/grounding holes.



North America Solar Business Team  
LG Electronics U.S.A. Inc  
1000 Sylvan Ave, Englewood Cliffs, NJ 07632

Contact: lg.solar@lge.com  
www.lgsolarusa.com

Product specifications are subject to change without notice.  
DS-N2-60-C-G-F-EN-50427

Copyright © 2015 LG Electronics. All rights reserved.  
01/04/2015

Innovation for a Better Life

